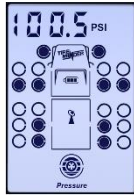


## TireMinder® TM66 – Full Delete

1. While in Monitoring Mode (mode where you can scroll through each tire position, observing both the pressure and temperatures of each tire) press and hold the left and right buttons for a full 5 seconds.



2. After a full 5 seconds you will see all 22 tire positions.



3. From here, press and hold the center and right buttons for 5 seconds until you hear a double beep. Upon hearing the double beep, all original tire positions will be deleted.



4. That's it! You can now either start to relearn transmitters or get out of Learning Mode by pressing and holding the left and right buttons for 5 seconds until hearing a beep.